



Nomura Research Institute Group

Mar. 23, 2023

Nomura Research Institute, Ltd.

## **NRI to Release “Senju Family 2023”, a New Version of its System**

### **Operation Management Solution**

#### **— Addition of Configuration Management Tool “Senju Configuration Manager” Brings Enhanced Security Measures —**

**Tokyo, Mar. 23, 2023** – This March, Nomura Research Institute, Ltd. (Headquarters: Tokyo, Japan; Chairman, President & CEO Shingo Konomoto, “NRI”) will release “Senju Family 2023”, the newest version of its system operation management solution “Senju Family<sup>1</sup>”.

With the threat of cyberattacks on the rise, security measures are becoming increasingly necessary in the realm of system operations. This latest version of Senju Family features a new configuration management tool called “Senju Configuration Manager (Senju/CM)”, which will reliably implement measures to address vulnerabilities in managed systems. By allowing users to tag system configuration information that has been collected by Senju/CM, the new tool makes it possible to easily search for configuration information, and rapidly ascertain the status of security measures after a vulnerability has been discovered.

In addition, the latest version of our system operation management tool “Senju DevOperation Conductor (Senju/DC)” offers enhanced linkages with cloud services. This makes it possible to easily achieve integrated operations with existing systems, and to streamline management operations in diverse and complex system environments.

Furthermore, our service desk tool “Senju Service Manager (Senju/SM)” now comes with a feature that automatically checks any information to be verified in performing system management operations. This reduces the amount of work required to check information being managed by external services, such as the names of managed servers, thereby preventing human errors (Fig. 1).

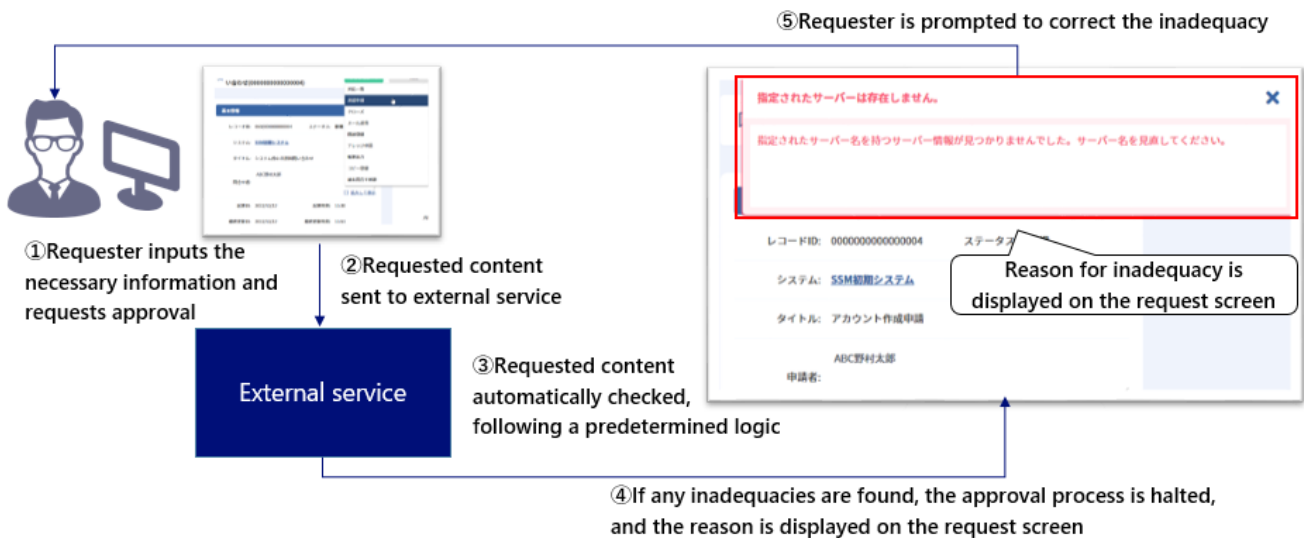


Fig. 1: Automated Checking of System Management Operations (Image)

The main enhancements to each Senju Family tool (Chart 1).

Chart 1: Enhancements to Each Tool

Tool name	Category	Main enhancements
Senju/DC	System operation management	Enhanced cloud management with JSON support Enhanced security using advanced approval support
Senju/SM	Service desk	Checking content of tasks linked to external services Reduced operational burden via tutorial
Senju/CM ※New product	Configuration management	Agentless automated collection of IT asset information Enhanced vulnerability measures via links with other tools

In conjunction with this upgrade to Senju Family, NRI will also be gradually updating mPLAT<sup>3</sup>, a system operation platform based on Senju Family that is operated via the cloud. Going forward, NRI will continue to provide advanced, streamlined solutions and services for system operations, to help achieve a safe and secure digital society.

<sup>1</sup> Senju Family: a system operation management tool suite developed and provided by NRI.

<sup>2</sup> JSON: a data description language, suited to performing fast exchanges of large volumes of data.

<sup>3</sup> mPLAT: a service that provides system operation features based on “Senju Family” via the cloud.

**Inquiries about this news release:**

Kayano Umezawa, Hiroyuki Matsumoto  
Corporate Communications Department  
Nomura Research Institute, Ltd.  
TEL: +81-3-5877-7100 E-mail: kouhou@nri.co.jp

**Inquiries about this matter:**

Senju Information Center  
Nomura Research Institute, Ltd.  
TEL: +81-120-736-580 E-mail: senjuinfo@nri.co.jp

